

POWERFLEX®

PART NUMBER

PFF1-1130

DESCRIPTION

UPPER GEARBOX MOUNT INSERT

INSTALLATION GUIDE

Contents (parts per pack):

1 x Polyurethane Insert

Please read the complete fitting instructions and check package components before fitment. These fitting instructions are to be used as a guide and in conjunction with workshop manual.

It is recommended that:

- all work to be carried out by a licensed technician;
- all safety precautions adhered to;
- wheel alignment to be checked and adjusted as required after any suspension work.
- All fasteners must be tensioned to manufacturer's torque settings.

Fitting Instructions:

1. Support the gearbox from below with a jack or axle stand.
2. Ensure the key is removed from the ignition before disconnecting the battery terminals. Always disconnect the negative terminal first.
3. Unbolt the battery retaining strap (13mm) and remove the battery.
4. Undo the 3 bolts (13mm) securing the battery tray, and remove the battery tray.
5. Undo the 2 (or 3 depending on model) mount-to-gearbox bolts (E18). Ensure the hardware supporting the gearbox is in place and will hold the gearbox' weight before doing this step.
6. Undo the 2 mount-to-chassis bolts (E18), and remove the mount from the vehicle.
7. The top half of the mount is secured to the bottom half by swaged bolt holes. These need to be drilled away with a chamfer bit or 15mm drill to separate the two halves.
8. Once separated, push the insert around the top of the rubber mount into the voids, with the debossed Powerflex logo facing outwards, away from the gearbox bolt holes. Liquid soap may assist the fitting of the insert.
9. Ensure the inside of the top half of the mount is clean and free from any sharp edges and dirt, and push the two halves back together.
10. Refit the mount to the car. You MUST tighten all engine mount bolts to the manufacturer's specified torque settings. If this is not done, these bolts can be prone to catastrophic failure.
11. Refit the battery tray and battery.

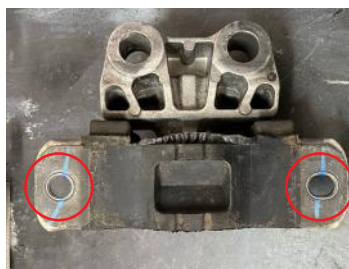


Figure 1: Swaged bolt holes to be drilled



Figure 2: Drill swaged holes



Figure 3: Separate two halves



Figure 4: Push insert into place



Figure 5: Fit to car