



PART NUMBER

PFF3-120-10/12

DESCRIPTION

SUBFRAME BUSH

INSTALLATION GUIDE

Contents (parts per pack):

- 2 x Polyurethane A Bushes 1 x PTFE/Silicone Grease
- 2 x Polyurethane B Bushes 2 x Stainless Steel Sleeves

Please read the complete fitting instructions and check package components before fitment. These fitting instructions are to be used as a guide and in conjunction with workshop manual.

It is recommended that:

- all work to be carried out by a licensed technician;*
- all safety precautions adhered to;*
- wheel alignment to be checked and adjusted as required after any suspension work.*
- All fasteners must be tensioned to manufacturer's torque settings.*



Fitting Instructions:

1. Remove the rear subframe and loosen the bolts. remove the front mount bolts completely to lower subframe to gain access.

2. Remove the original rubber bush from the bore of the subframe.

3. Clean any dirt and corrosion from the bore of the subframe and file off any sharp edges.

4. Fit polyurethane part A into the bottom side of the subframe bore, as shown in Figure 1.

5. Fit polyurethane part B into the top side of the subframe bore, as shown in Figure 1.

6. Apply some of the supplied grease into the bore of the polyurethane bush and insert the stainless steel into the bush so that it sits flush.

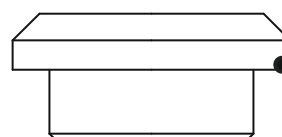
7. Refit the subframe back to the vehicle and tension all hardware to manufacturers recommended torque settings.



**TOP OF
SUBFRAME**



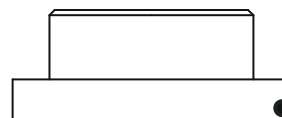
Stainless Steel Sleeve



Polyurethane Part B



Subframe



Polyurethane Part A

Figure 1